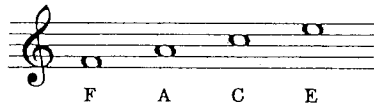




lesson 3

THE SPACES OF THE TREBLE STAFF

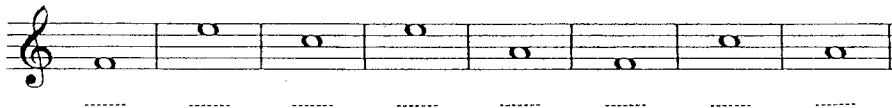
The spaces of the Treble Staff are:



To help you remember the spaces of the Treble Staff, they spell FACE.



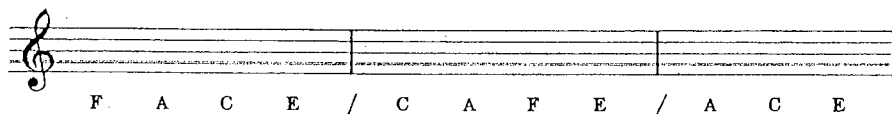
Write in the letter names of these notes.



Draw the correct space note over each letter name.



Spell the following words with space notes.



lesson 4

DOUBLE BAR

DOUBLE BAR

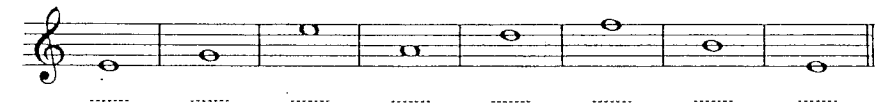
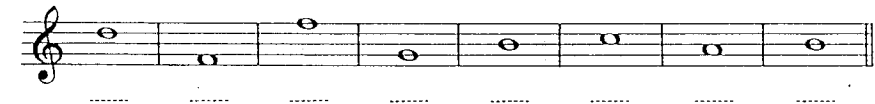
At the end of every song or other musical composition is a sign which means "the END". It is composed of a narrow bar line and a wide bar line.



There is also a Double Bar with two narrow bar lines, designating the end of part of a composition, but not the final close.



Write in the letter names of these notes.



Draw a note over each letter name.

